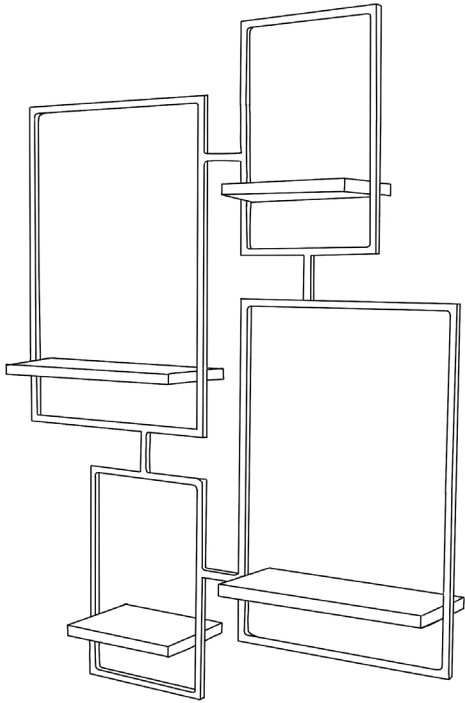
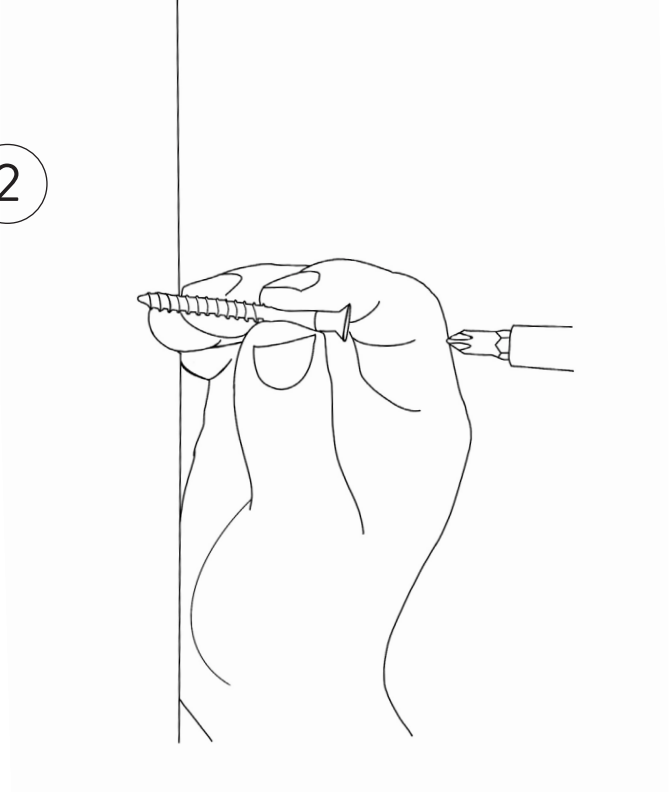


1



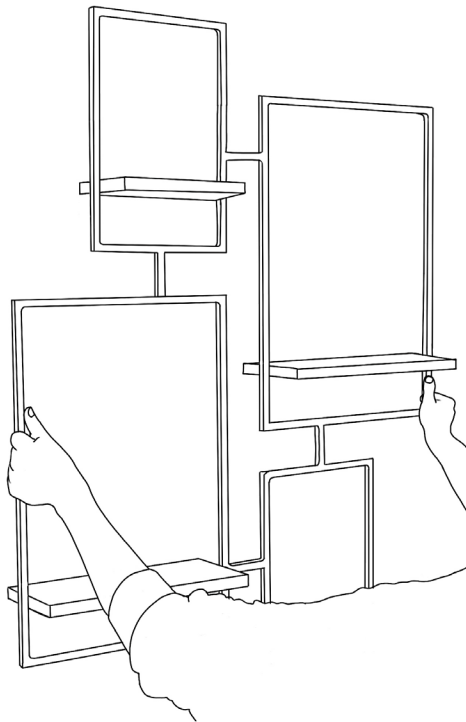
UNPACK SHELF
Carefully take shelving unit out of its package.

2



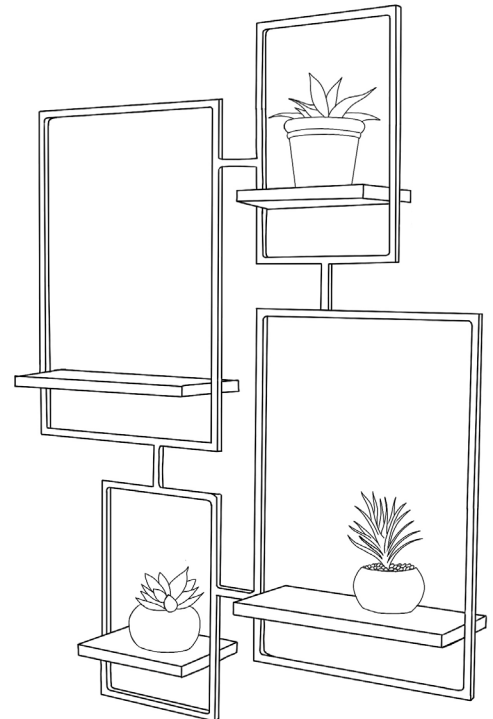
DRILL (4) SCREWS INTO WALL
Have someone help you hold the shelf against the wall while you drill all four screws into keyholes.

3



CAREFULLY PULL SHELF
down to test sturdiness of screws.

4



STYLE YOUR SHELF
with your favorite accessories!